

# Human HLA-A\*02:01&B2M&GP100 (YLEPGPVTA) Monomer Protein

Cat. No. MHC-HM402

## Description

<b>Source</b>	Recombinant Human HLA-A*02:01&B2M&GP100 (YLEPGPVTA) Monomer Protein is expressed from HEK293 with His tag and Avi tag at the C-Terminus. It contains Gly25-Thr305(HLA-A*02:01),Ile21-Met119(B2M) and YLEPGPVTA peptide.
<b>Accession</b>	A0A140T913(HLA-A*02:01)&P61769(B2M)&YLEPGPVTA
<b>Molecular Weight</b>	The protein has a predicted MW of 50.4 kDa. Due to glycosylation, the protein migrates to 52-62 kDa based on Tris-Bis PAGE result.
<b>Endotoxin</b>	Less than 1EU per µg by the LAL method.
<b>Purity</b>	> 95% as determined by Tris-Bis PAGE > 95% as determined by HPLC

## Formulation and Storage

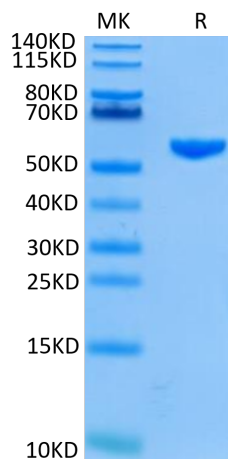
<b>Formulation</b>	Lyophilized from 0.22µm filtered solution in PBS (pH 7.4). Normally 8% trehalose is added as protectant before lyophilization.
<b>Reconstitution</b>	Centrifuge the tube before opening. Reconstituting to a concentration more than 100 µg/ml is recommended. Dissolve the lyophilized protein in distilled water.
<b>Storage</b>	-20 to -80°C for 12 months as supplied from date of receipt. -20 to -80°C for 3-6 months in unopened state after reconstitution. 2-8°C for 2-7 days after reconstitution. Recommend to aliquot the protein into smaller quantities for optimal storage. Please minimize freeze-thaw cycles.

## Background

Glycoprotein 100, gp100 or Melanocyte protein PMEL is 661 amino acids long and is a type I transmembrane glycoprotein enriched in melanosomes, which are the melanin-producing organelles in melanocytes. This protein is involved in melanosome maturation. The Human HLA-A\*0201 gp100 (YLEPGPVTA) complex Protein is a complex of HLA-A\*0201 of the MHC Class I, B2M and YLEPGPVTA peptide of the gp100.

## Assay Data

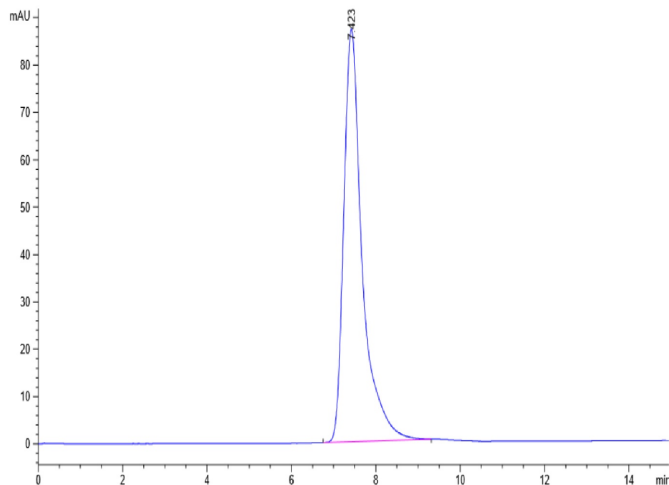
### Tris-Bis PAGE



Human HLA-A\*02:01&B2M&GP100 (YLEPGPVTA) Monomer on Tris-Bis PAGE under reduced condition. The purity is greater than 95%.

### SEC-HPLC

Assay Data

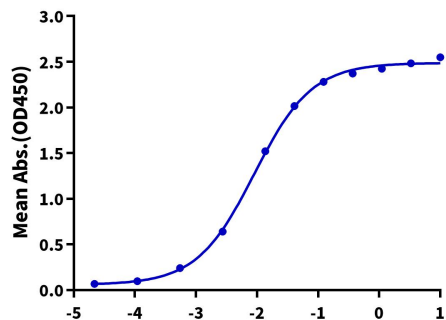


The purity of Human HLA-A\*02:01&B2M&GP100 (YLEPGPVTA) Monomer was greater than 95% as determined by SEC-HPLC.

ELISA Data

Human HLA-A\*02:01&B2M&GP100 (YLEPGPVTA) Monomer, His Tag ELISA

0.2µg Human HLA-A\*02:01&B2M&GP100 (YLEPGPVTA) Monomer, His Tag Per Well



Log Anti-HLA-A\*02:01&B2M&GP100 Antibody, hFc Tag Conc. (µg/ml)

Immobilized Human HLA-A\*02:01&B2M&GP100 (YLEPGPVTA) Monomer, His Tag at 2µg/ml (100µl/Well) on the plate. Dose response curve for Anti-HLA-A\*02:01&B2M&GP100 (YLEPGPVTA) Antibody, hFc Tag with the EC50 of 9.1ng/ml determined by ELISA.